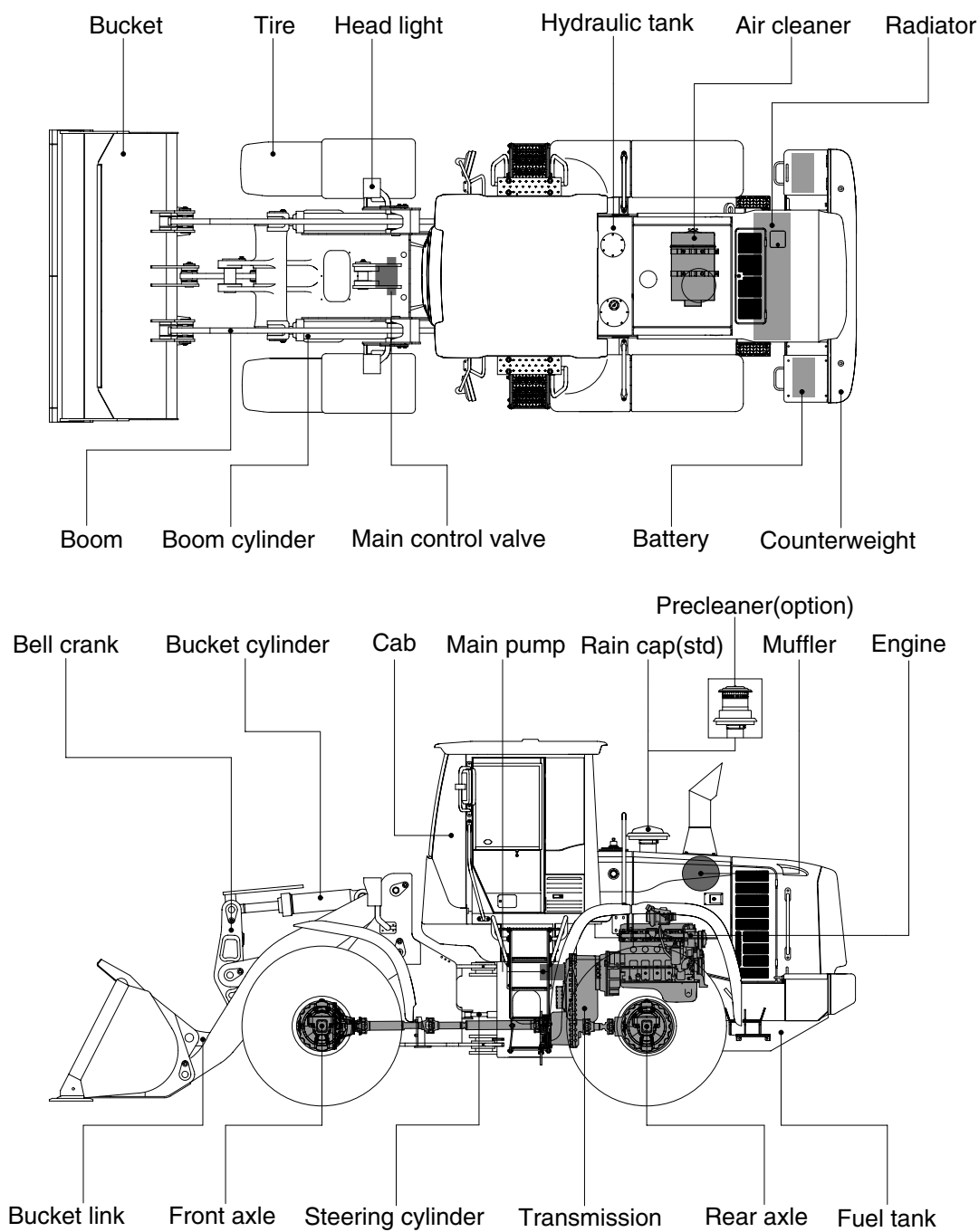


2. SPECIFICATIONS

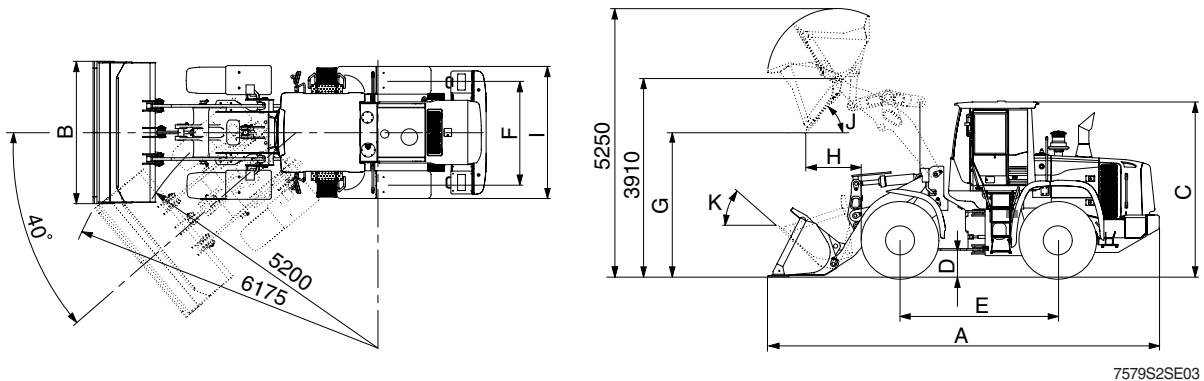
1. MAJOR COMPONENTS



7609S2SE01

2. SPECIFICATIONS

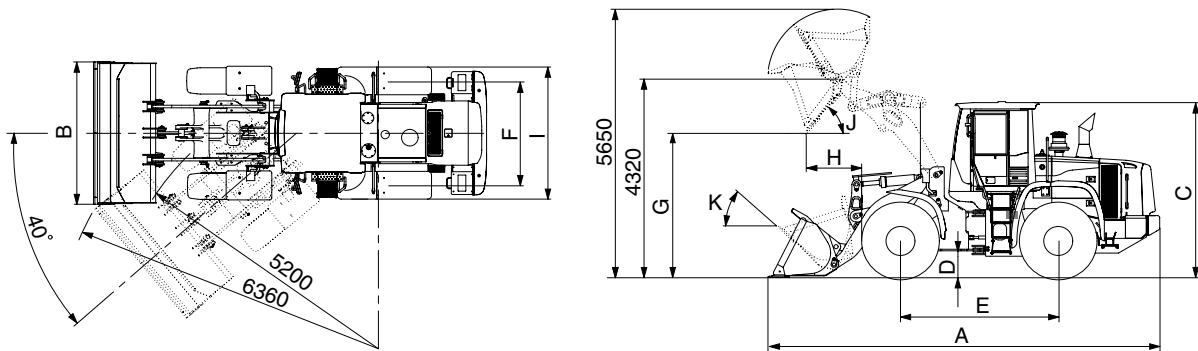
1) WITH BOLT-ON CUTTING EDGE TYPE BUCKET (HL757-9S)



7579S2SE03

Description			Unit	Specification
Operating weight			kg (lb)	14000 (30860)
Bucket capacity	Struck		m³ (yd³)	2.3 (3.0)
	Heaped			2.7 (3.5)
Overall length	A		mm (ft-in)	7540 (24' 9")
Overall width	B			2740 (9' 0")
Overall height	C			3400 (11' 2")
Ground clearance	D			410 (1' 4")
Wheelbase	E			3050 (10' 0")
Tread	F			2050(6' 9")
Dump clearance at 45°	G			2860 (9' 5")
Dump reach (full lift)	H			1040 (3' 5")
Width over tires	I			2580 (8' 6")
Dump angle	J			degree (°)
Roll back angle (carry position)	K		46	
Cycle time	Lift (with load)		sec	6.0
	Dump (with load)			1.2
	Lower (empty)			3.1
Maximum travel speed			km/hr (mph)	35.8 (22.2)
Braking distance			m (ft-in)	12 (39' 4")
Minimum turning radius (center of outside tire)				5.2 (17' 1")
Gradeability			degree (°)	30
Brakeout force			kg (lb)	12720 (28040)
Travel speed	Forward	First gear	km/hr (mph)	6.9 (4.3)
		Second gear		11.4 (7.1)
		Third gear		22.7 (14.1)
		Fourth gear		35.8 (22.2)
	Reverse	First gear		7.2 (4.5)
		Second gear		12.0 (7.5)
		Third gear		23.8 (14.8)

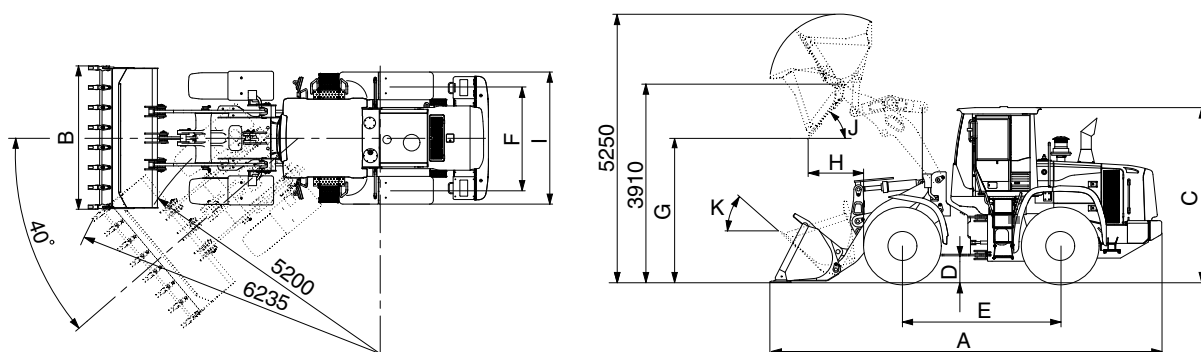
WITH BOLT-ON CUTTING EDGE TYPE BUCKET (HL757XTD-9S)



7579S2SE03-1

Description			Unit	Specification
Operating weight			kg (lb)	14500 (31970)
Bucket capacity	Struck		m³ (yd³)	2.3 (3.0)
	Heaped			2.7 (3.5)
Overall length	A		mm (ft-in)	7970 (26' 2")
Overall width	B			2740 (9' 0")
Overall height	C			3400 (11' 2")
Ground clearance	D			410 (1' 4")
Wheelbase	E			3050 (10' 0")
Tread	F			2050 (6' 9")
Dump clearance at 45°	G			3270 (10' 9")
Dump reach (full lift)	H			1060 (3' 6")
Width over tires	I			2580 (8' 6")
Dump angle	J			degree (°)
Roll back angle (carry position)	K		48	
Cycle time	Lift (with load)		sec	6.0
	Dump (with load)			1.2
	Lower (empty)			3.1
Maximum travel speed			km/hr (mph)	35.8 (22.2)
Braking distance			m (ft-in)	12 (39' 4")
Minimum turning radius (center of outside tire)				5.2 (17' 1")
Gradeability			degree (°)	30
Brakeout force			kg (lb)	12560 (27690)
Travel speed	Forward	First gear	km/hr (mph)	6.9 (4.3)
		Second gear		11.4 (7.1)
		Third gear		22.7 (14.1)
		Fourth gear		35.8 (22.2)
	Reverse	First gear		7.2 (4.5)
		Second gear		12.0 (7.5)
		Third gear		23.8 (14.8)

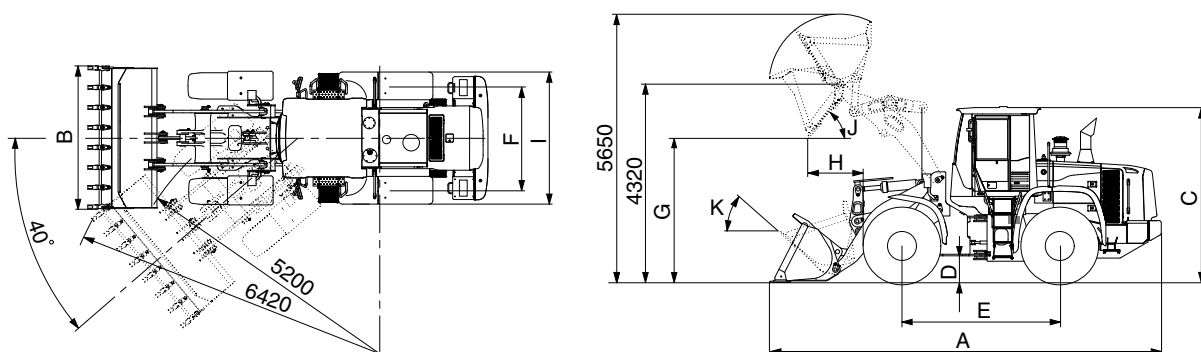
2) WITH TOOTH TYPE BUCKET (HL757-9S)



7579S2SE02

Description			Unit	Specification
Operating weight			kg (lb)	14000 (30860)
Bucket capacity	Struck		m³ (yd³)	2.2 (2.9)
	Heaped			2.6 (3.4)
Overall length	A		mm (ft-in)	7640 (25' 1")
Overall width	B			2790 (9' 2")
Overall height	C			3400 (11' 2")
Ground clearance	D			410 (1' 4")
Wheelbase	E			3050 (10' 0")
Tread	F			2050 (6' 9")
Dump clearance at 45°	G			2760 (9' 1")
Dump reach (full lift)	H			1140 (3' 9")
Width over tires	I			2580 (8' 6")
Dump angle	J			degree (°)
Roll back angle (carry position)	K		46	
Cycle time	Lift (with load)		sec	6.0
	Dump (with load)			1.2
	Lower (empty)			3.1
Maximum travel speed			km/hr (mph)	35.8 (22.2)
Braking distance			m (ft-in)	12 (39' 4")
Minimum turning radius (center of outside tire)				5.2 (17' 1")
Gradeability			degree (°)	30
Brakeout force			kg (lb)	11480 (25310)
Travel speed	Forward	First gear	km/hr (mph)	6.9 (4.3)
		Second gear		11.4 (7.1)
		Third gear		22.7 (14.1)
		Fourth gear		35.8 (22.2)
	Reverse	First gear		7.2 (4.5)
		Second gear		12.0 (7.5)
		Third gear		23.8 (14.8)

WITH TOOTH TYPE BUCKET (HL757XTD-9S)



7579S2SE02-1

Description			Unit	Specification
Operating weight			kg (lb)	14500 (31970)
Bucket capacity	Struck		m³ (yd³)	2.3 (3.0)
	Heaped			2.7 (3.5)
Overall length	A		mm (ft-in)	8070 (26' 6")
Overall width	B			2790 (9' 2")
Overall height	C			3400 (11' 2")
Ground clearance	D			410 (1' 4")
Wheelbase	E			3050 (10' 0")
Tread	F			2050 (6' 9")
Dump clearance at 45°	G			3180 (10' 5")
Dump reach (full lift)	H			1140 (3' 9")
Width over tires	I			2580 (8' 6")
Dump angle	J			degree (°)
Roll back angle (carry position)	K		48	
Cycle time	Lift (with load)		sec	6.0
	Dump (with load)			1.2
	Lower (empty)			3.1
Maximum travel speed			km/hr (mph)	35.8 (22.2)
Braking distance			m (ft-in)	12 (39' 4")
Minimum turning radius (center of outside tire)				5.2 (17' 1")
Gradeability			degree (°)	30
Brakeout force			kg (lb)	11120 (24520)
Travel speed	Forward	First gear	km/hr (mph)	6.9 (4.3)
		Second gear		11.4 (7.1)
		Third gear		22.7 (14.1)
		Fourth gear		35.8 (22.2)
	Reverse	First gear		7.2 (4.5)
		Second gear		12.0 (7.5)
		Third gear		23.8 (14.8)

3. WEIGHT

Item		kg	lb
Front frame assembly		1139	2510
Rear frame assembly		1667	3680
Front fender (LH & RH)		31	68
Counterweight	HL757-9S	550	1210
	HL757XTD-9S	840	1850
Cab assembly		780	1720
Engine assembly		485	1070
Transmission assembly		518	1140
Drive shaft (front)		26	57
Drive shaft (center)		22	49
Drive shaft (rear)		13	29
Front axle (include differential)		970	2140
Rear axle (include differential)		760	1680
Tire (20.5-25, 16PR, L3)		203	448
Hydraulic tank assembly		230	507
Fuel tank assembly		219	483
Main pump assembly		40	88
Fan & brake pump assembly		6.5	14.3
Main control valve (2/3 spool)		45 / 65	99 / 143
Steering valve (EHPS)		10	22
Boom assembly	HL757-9S	980	2160
	HL757XTD-9S	1145	2520
Bell crank assembly		264	580
Bucket link		48	110
2.8 m ³ bucket, with bolt on cutting edge		1075	2370
2.6 m ³ bucket, with tooth		1060	2340
Boom cylinder assembly		108	238
Bucket cylinder assembly		122	269
Steering cylinder assembly		29	64
Seat		40	88
Battery		44	97

4. SPECIFICATION FOR MAJOR COMPONENTS

1) ENGINE

Item	Specification
Model	Cummins QSB6.7 / HYUNDAI HE6.7
Type	4-cycle turbocharged and charge air-cooled diesel engine
Control type	Electronic control
Cooling method	Water cooling
Number of cylinders and arrangement	6 cylinders, in-line
Firing order	1-5-3-6-2-4
Combustion chamber type	Direct injection type
Cylinder bore × stroke	107 × 124 mm (4.2" × 4.9")
Piston displacement	6730 cc (410cu in)
Compression ratio	17.2 : 1
Rated horse power (Net)	170 hp at 2100 rpm
Maximum torque at 1400 rpm (Net)	82 kgf · m (593 lbf · ft)
Engine oil quantity	18 l (4.8 U.S. gal)
Wet weight	485 kg(1069 lb)
High idling speed	2230 ± 50 rpm
Low idling speed	800 ± 25 rpm
Rated fuel consumption	252 g/kW · hr
Starting motor	Nippondenso 228000-7902 (24V-3.7kW)
Alternator	Delco Remy 24SI (24V-70Amp)
Battery	2 × 12V × 160Ah

2) MAIN PUMP

Item	Specification
Type	Gear pump
Capacity	56+56 cc/rev
Maximum operating pressure	210 kgf/cm ² (2990 psi)
Rated oil quantity	225 l /min (59.4 U.S.gpm)
Rated speed	2100 rpm

3) FAN + BRAKE PUMP

Item	Specification	
	Fan	Brake
Type	Gear pump	
Capacity	19.4 cc/rev	11.9 cc/rev
Maximum operating pressure	120 kgf/cm ² (1710 psi)	150 kgf/cm ² (2130 psi)
Rated oil quantity	39 l /min (10.3 U.S.gpm)	24 l /min (6.3 U.S.gpm)
Rated speed	2100 rpm	

4) MAIN CONTROL VALVE

Item	Specification
Type	2 spool
Operating method	Hydraulic pilot assist
System pressure	210 kgf/cm ² (2990 psi)
Overload relief valve pressure	240 kgf/cm ² (3410 psi)

5) REMOTE CONTROL VALVE

Item		Specification
Type		Pressure reducing type
Operating pressure	Minimum	6.5 kgf/cm ² (92.4 psi)
	Maximum	22 kgf/cm ² (312.9 psi)
Single operation stroke	Lever	80 mm (3.4 in)

6) CYLINDER

Item		Specification
Boom cylinder	Bore dia × Rod dia × Stroke	ø 140 × ø 75 × 750 mm
Bucket cylinder	Bore dia × Rod dia × Stroke	ø 160 × ø 80 × 475 mm
Steering cylinder	Bore dia × Rod dia × Stroke	ø 70 × ø 45 × 436 mm

7) DYNAMIC POWER TRANSMISSION DEVICES

Item			Specification
Transmission	Model		4WG190
	Type	Converter	Single-stage, single-phase
		Transmission	Full-automatic power shift
	Converter stall ratio		2.542 : 1
	Gear shift		Forward fourth gear, reverse third gear
	Control		Electrical single lever type, kick-down system
	Pump rated flow		105 ℓ /min (27.7 U.S.gpm) at 2000 rpm
Axle	Drive devices		4-wheel drive
	Front		Front fixed location
	Rear		Oscillation ± 13° of center pin-loaded
Wheels	Tires		20.5-25, 16PR (L3)
Brakes	Travel		Four-wheel, wet-disc type, full hydraulic
	Parking		Spring applied, hydraulic released brake on transmission
Steering	Type		Full hydraulic, articulated
	Steering angle		40° to both right and left angle, respectively